

# 5150 SW 88th Terrace Gainesville, FL 32608

For Sale \$**209,000**

Schedule a Showing  
(352) 373-0018



1,402 sqft living area  
2 Bedrooms  
2 Bathrooms  
Living Room  
Family Room  
Sun Room  
Vaulted Ceilings  
Luxury Master Suite  
Fenced Yard  
Open Patio  
Private Guest Suite  
Two Car Garage

## Camden Court in Haile Plantation

More photos online

Spend your time doing the things you love, instead of worrying about yard work. This clean and comfortable 2 bed 2 bath town home is move-in ready and waiting for your personal touches.

The home is ideally located, walk or bike to The Village Center shops and Market Square.

The impressive view from the foyer shows off the living room's the vaulted ceilings and large wall of windows. The room is bathed in light and has a beautiful view of the trees in the back yard.

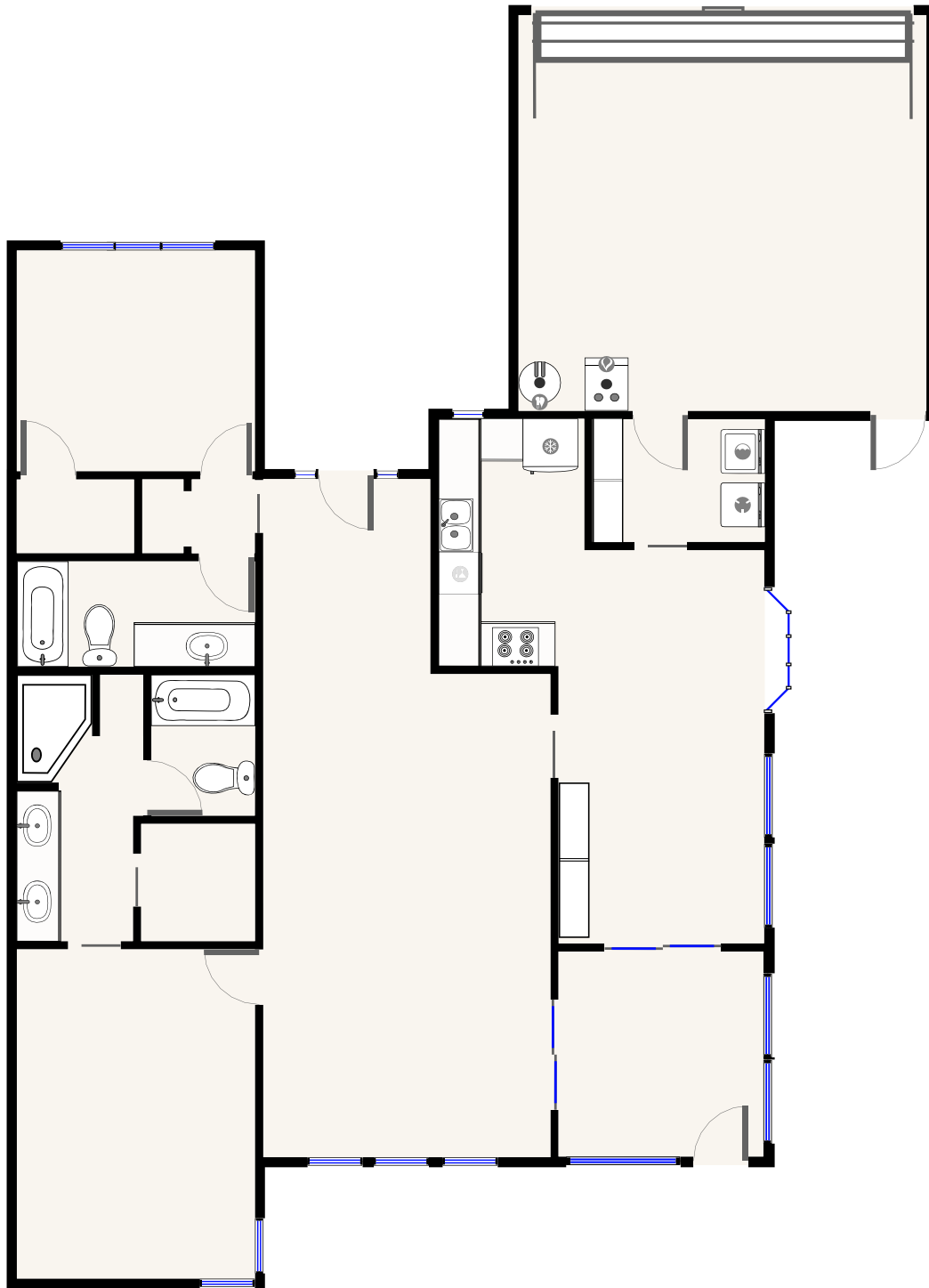
The master bedroom is roomy and has a luxury bathroom. There is a standing shower, separate commode and bath tub, his-and-hers sinks, linen closet, and walk-in closet.

This is a low maintenance home, the association takes care of the front landscaping. The back yard is fenced and has a nice sitting area. Entertain guests out back on the beautiful patios made by pavers.



[www.Gainesvilleian.com/415239](http://www.Gainesvilleian.com/415239)  
visit to see Photos, Floor Plan, & Property Details

SEIDE  REALTY  
We work hard so you can sleep at night



## Camden Court

5150 SW 88th Ter, Gainesville, FL, United States 32608



Floor plan is an artist's rendering. All information regardless of source, including square footage and lot sizes is deemed reliable but is not guaranteed and should be verified by a personal inspection and/or with the appropriate professional(s).